



Frame UK have extensive experience in the health-care sector - undertaking a variety of projects for Healthcare Trusts, Diagnostic Treatment Centres, Hospitals, and National Health Service Contractors - a few examples are highlighted here:

**Mount Gould Hospital
Plymouth, Devon**



The Centre specialises in intermediate care and rehabilitation - facilities include treatment areas, diagnostic and outpatients services and ward areas with a total of 60 beds.

**Bodmin Hospital,
Cornwall**



This purpose built facility covering in excess of 200,000 ft² is one of the largest timber frame projects ever undertaken in the South West. It provides a 48 bed In-Patient Unit, a Minor Injury Unit, Out Patient Department, Therapy and X-Ray Departments. The site is a mixture of single, 2 and 3-storey buildings.

**Nichols Centre,
Exeter, Devon**



This is a key, strategic re-development which includes a day centre and 18 self contained flats for people with a learning disability, offering a range of support activities.

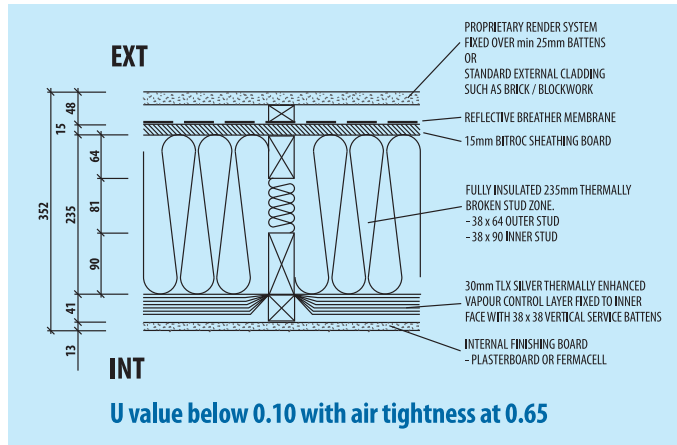
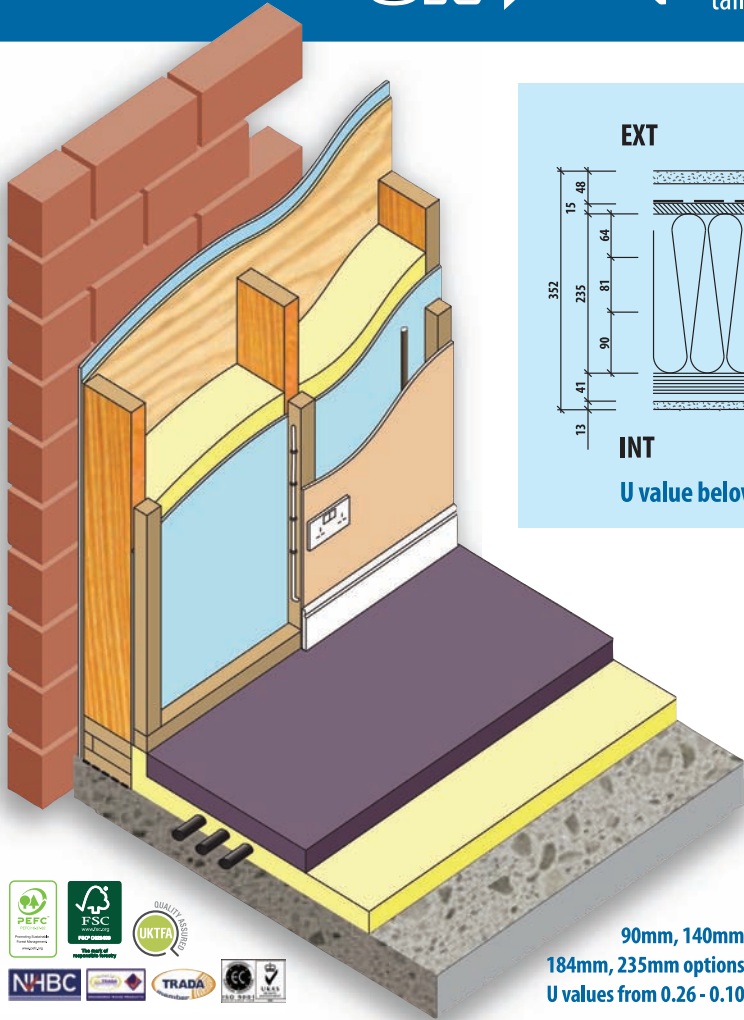
**Pondsmead
Nursing Home,
Oakhill, Shepton Mallet
Somerset**



A development of 8 close care houses and apartments of one and two bedrooms for over 55's. This was a design and build project incorporating reclaimed materials and in keeping with the Grade II listed site.



Established in 1974, Frame UK have built an enviable reputation for offering advanced timber engineered solutions - thermally efficient quality timber frame buildings with specifications tailored to client requirements and budgets.



Walls

open panel, closed panel, hybrid panel

Floors

solid joists, open metal-web joists, floor cassettes, acoustic floors

Roofs

all forms of trussed designs, flat roofs, insulated roof cassettes

Sustainability

chain of custody (FSC/PEFC) all components have a BRE 'Green Guide' rating of A and A+



90mm, 140mm
184mm, 235mm options
U values from 0.26 - 0.10



One of the largest fully automated timber frame manufacturing plants in the UK

