



University of Exeter - Frame UK hit new heights

Frame UK were awarded the prestigious contract to supply Balfour Beatty subsidiary Cowlin Construction with 1800 student rooms over two years for their university projects. This includes new student accommodation units at three locations on the University of Exeter's Streatham Campus and forms part of the University's £450 million strategic investment programme.

Neil Stevens, Operations Director said: "Frame UK are extremely pleased to be working on this prestigious project. It reinforces our position as a leading contractor in the student accommodation and higher education markets - we look forward to the completion of this contract which will provide key facilities for future students at a leading university in the South West".

Mock up units for the project were created in the Frame UK factory to ensure accuracy and precision on site. From its 90,000 sq ft

'Quality control is a lot better in a factory than on site and also speeds up the whole build process making it cheaper for the client as well'



state of the art manufacturing facility in Redruth, Cornwall, the company can maximise mechanisation opportunities to make products according to clients' specific needs, with student accommodation making up a significant element of its order book. Operations Director, Neil Stevens, continued: "With our vision of more off-site manufacture we've invested heavily in automated machinery - quality control is a lot better in a factory than on site and also speeds up the whole build

process, making it cheaper for the client as well. This is an important consideration since trimming two or three weeks off the build of a student block represents two or three weeks extra revenue for the client."



Tremough Campus, Penryn

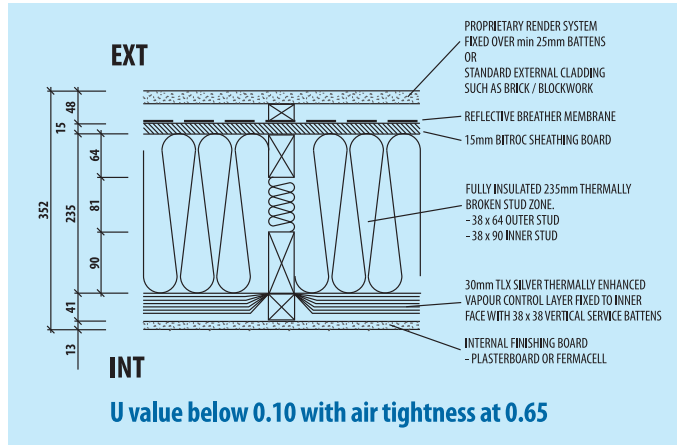
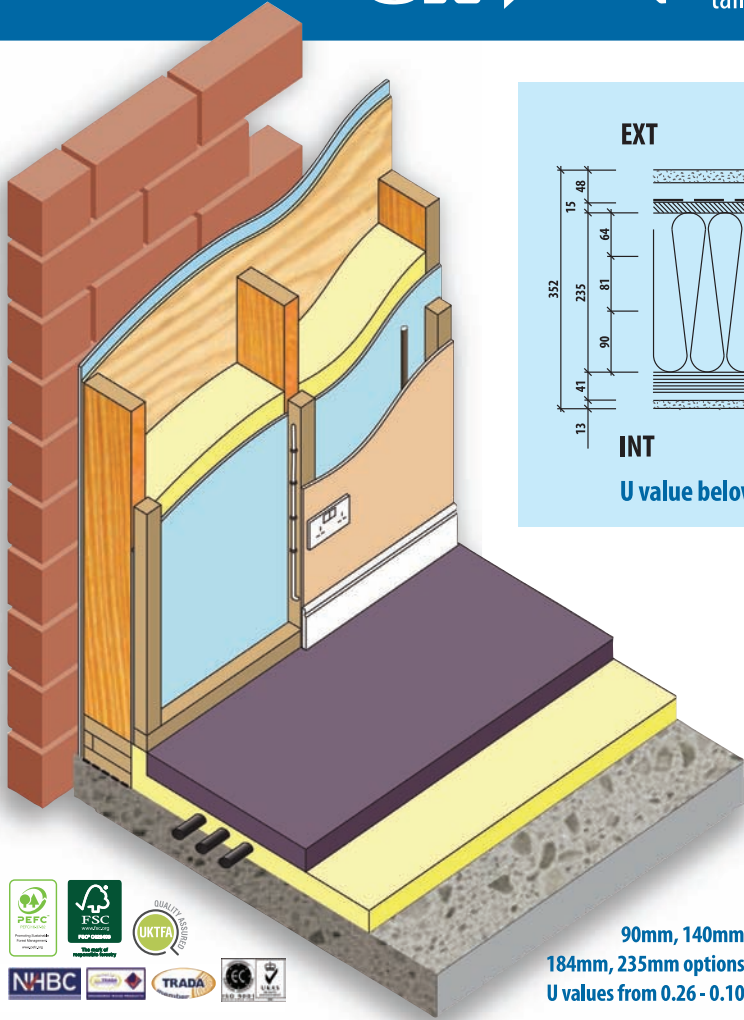
Student accommodation at Tremough campus comprising ten accommodation blocks and 530 student apartments. Timber frame construction, cedar panelling exterior with slate and render. The seventy acre site provides massive facilities made



available to students through the Combined University in Cornwall (C.U.C.) initiative. Tremough Campus, Penryn, was selected as South West Regional Winner in the Regeneration category of the Royal Institution of Chartered Surveyors Awards.



Established in 1974, Frame UK have built an enviable reputation for offering advanced timber engineered solutions - thermally efficient quality timber frame buildings with specifications tailored to client requirements and budgets.



Walls

open panel, closed panel, hybrid panel

Floors

solid joists, open metal-web joists, floor cassettes, acoustic floors

Roofs

all forms of trussed designs, flat roofs, insulated roof cassettes

Sustainability

chain of custody (FSC/PEFC) all components have a BRE 'Green Guide' rating of A and A+



90mm, 140mm
184mm, 235mm options
U values from 0.26 - 0.10



One of the largest fully automated timber frame manufacturing plants in the UK

